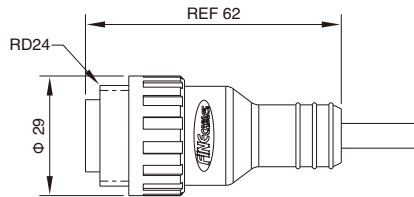


RD24 Male Molded Cable, Straight

- Connector series: RD24
- Gender: Male
- Locking type: Fix screw
- Mounting type: Straight
- Part No.: MA24M*P***STXXXXXX

* refers to coding type
 *** refers to pins number
 X refers to cable specification



General information

Ambient temperature:	-40°C ~ +80°C(fixed installation) -20°C ~ +80°C(flexible installation)
Connector insert:	PBT
Connector contacts:	Brass with silver plated
Coupling nut/screw:	PA

Insulation resistance:	≥ 100MΩ
Contact resistance :	≤ 5mΩ
Shielding:	Unavailable
IP rating:	IP68 in locked condition
Mating endurance:	>500 cycles

Electrical data & Mechanical data

Contacts	Rated current	Voltage		Wire gauge / size		Cable jacket	Part No.
		A/C	D/C	AWG	mm ²		
1+PE (1+1) A-Coding	12A	600V	600V	18~14AWG	0.75	PUR/PVC	MA24MAP1+1STXXXXXX
2+PE (2+1) A-Coding	12A	600V	600V	18~14AWG	0.75	PUR/PVC	MA24MAP2+1STXXXXXX
3+PE (3+1) A-Coding	12A	600V	600V	18~14AWG	0.75	PUR/PVC	MA24MAP3+1STXXXXXX
6+PE (6+1) B-Coding	8A	250V	250V	22~16AWG	0.34~1.5	PUR/PVC	MA24MBP6+1STXXXXXX

Note: X refers to cable specification

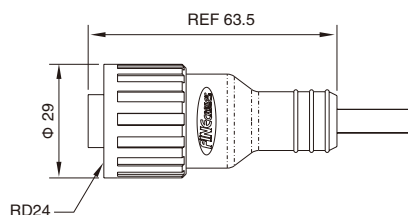
Remarks

- Please refer to Page 578 for the Conversion between American Wire Gauge AWG and Wire Cross-section mm².
- Please refer to Page 423 for products' part number encoding rule.

RD24 Female Molded Cable, Straight

- Connector series: RD24
- Gender: Female
- Locking type: Fix screw
- Mounting type: Straight
- Part No.: MA24F*P***STXXXXXX

* refers to coding type
 *** refers to pins number



General information

Ambient temperature:	-40°C ~ +80°C(fixed installation) -20°C ~ +80°C(flexible installation)
Connector insert:	PBT
Connector contacts:	Brass with silver plated
Coupling nut/screw:	PA
Seal / O-ring:	Epoxy resin / EPDM

Insulation resistance:	≥ 100MΩ
Contact resistance :	≤ 5mΩ
Shielding:	Unavailable
IP rating:	IP68 in locked condition
Mating endurance:	>500 cycles

Electrical data & Mechanical data

Contacts		Rated current	Voltage		Wire gauge / size		Cable jacket	Part No.
			A/C	D/C	AWG	mm ²		
1+PE (1+1)	 A-Coding	12A	600V	600V	18~14AWG	0.75	PUR/PVC	MA24FAP1+1STXXXXXX
2+PE (2+1)	 A-Coding	12A	600V	600V	18~14AWG	0.75	PUR/PVC	MA24FAP2+1STXXXXXX
3+PE (3+1)	 A-Coding	12A	600V	600V	18~14AWG	0.75	PUR/PVC	MA24FAP3+1STXXXXXX
6+PE (6+1)	 B-Coding	8A	250V	250V	22~16AWG	0.34~1.5	PUR/PVC	MA24FBP6+1STXXXXXX

Note: X refers to cable specification

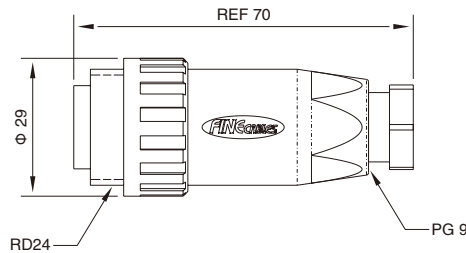
Remarks

- Please refer to Page 578 for the Conversion between American Wire Gauge AWG and Wire Cross-section mm².
- Please refer to Page 423 for products' part number encoding rule.

RD24 Male Field Wirable Assembly, Straight, Solder

- Connector series: RD24
- Gender: Male
- Locking type: Fix screw
- Mounting type: Straight
- Part No.: MB24MA*FP***ST-3

* refers to coding type
 *** refers to pins number



General information

Ambient temperature:	-25°C ~ +125 °C
Connector insert:	PBT
Connector contacts:	Brass with silver plated
Coupling nut/screw:	PA
Seal / O-ring:	Epoxy resin / EPDM
Termination type:	Solder

Insulation resistance:	≥ 100MΩ
Contact resistance:	≤ 5mΩ
Shielding:	Unavailable
Suitable cable Dia.:	PG9: 6~8mm
IP rating:	IP 68 in locked condition
Mating endurance:	>500 cycles

Electrical data & Mechanical data

Contacts	Contacts termination	Rated current	Voltage		Wire gauge / size		Wire insulation	Part No.
			A/C	D/C	AWG	mm ²		
1+PE (1+1) A-Coding	Solder version	12A	600V	600V	18~14AWG	0.75	PVC wire or customized	MB24MAAFP1+1ST-3
2+PE (2+1) A-Coding	Solder version	12A	600V	600V	18~14AWG	0.75	PVC wire or customized	MB24MAAFP2+1ST-3
3+PE (3+1) A-Coding	Solder version	12A	600V	600V	18~14AWG	0.75	PVC wire or customized	MB24MAAFP3+1ST-3
6+PE (6+1) B-Coding	Solder version	8A	250V	250V	22~16AWG	0.34~1.5	PVC wire or customized	MB24MABFP6+1ST-3

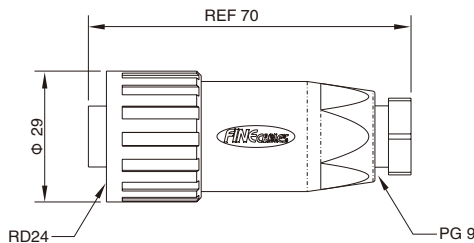
Remarks

- Please refer to Page 578 for the Conversion between American Wire Gauge AWG and Wire Cross-section mm².
- Please refer to Page 423 for products' part number encoding rule.

RD24 Female Field Wirable Assembly, Straight, Solder

- Connector series: RD24
- Gender: Female
- Locking type: Fix screw
- Mounting type: Straight
- Part No.: MB24FA*FP***ST-3

* refers to coding type
*** refers to pins number



General information

Ambient temperature:	-25°C ~ +125 °C
Connector insert:	PBT
Connector contacts:	Brass with silver plated
Coupling nut/screw:	PA
Seal / O-ring:	Epoxy resin / EPDM
Termination type:	Solder

Insulation resistance:	≥ 100MΩ
Contact resistance:	≤ 5mΩ
Shielding:	Unavailable
Suitable cable Dia.:	PG9: 6~8mm
IP rating:	IP 68 in locked condition
Mating endurance:	>500 cycles

Electrical data & Mechanical data

Contacts	Contacts termination	Rated current	Voltage		Wire gauge / size		Wire insulation	Part No.
			A/C	D/C	AWG	mm ²		
1+PE (1+1) A-Coding	Solder version	12A	600V	600V	18~14AWG	0.75	PVC wire or customized	MB24FAAFP1+1ST-3
2+PE (2+1) A-Coding	Solder version	12A	600V	600V	18~14AWG	0.75	PVC wire or customized	MB24FAAFP2+1ST-3
3+PE (3+1) A-Coding	Solder version	12A	600V	600V	18~14AWG	0.75	PVC wire or customized	MB24FAAFP3+1ST-3
6+PE (6+1) B-Coding	Solder version	8A	250V	250V	22~16AWG	0.34~1.5	PVC wire or customized	MB24FABFP6+1ST-3

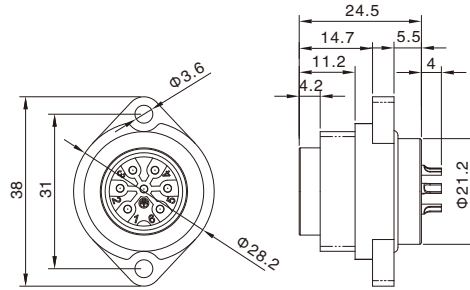
Remarks

- Please refer to Page 578 for the Conversion between American Wire Gauge AWG and Wire Cross-section mm².
- Please refer to Page 423 for products' part number encoding rule.

RD24 Male Panel Mount, Solder, Front fastened

- Connector series: RD24
- Gender: Male
- Locking type: Fix screw
- Mounting type: Front fastened
- Part No.: MA24MS*FP***ST

* refers to coding type
*** refers to pins number



General information

Ambient temperature:	-25°C ~ +125 °C
Connector insert:	PBT
Connector contacts:	Brass with silver plated
Seal / O-ring:	EPDM

Insulation resistance:	$\geq 100M\Omega$
Contact resistance:	$\leq 5m\Omega$
Shielding:	Unavailable
IP rating:	IP 68 in locked condition
Mating endurance:	>500 cycles

Electrical data & Mechanical data

Contacts	Contacts termination	Rated current	Voltage		Wire gauge / size		Wire insulation	Part No.
			A/C	D/C	AWG	mm ²		
1+PE (1+1) A-Coding	Solder version	12A	600V	600V	18~14AWG	0.75	PUR/PVC	MA24MSAFP1+1ST
2+PE (2+1) A-Coding	Solder version	12A	600V	600V	18~14AWG	0.75	PUR/PVC	MA24MSAFP2+1ST
3+PE (3+1) A-Coding	Solder version	12A	600V	600V	18~14AWG	0.75	PUR/PVC	MA24MSAFP3+1ST
6+PE (6+1) B-Coding	Solder version	8A	250V	250V	22~16AWG	0.34~1.5	PUR/PVC	MA24MSBFP6+1ST

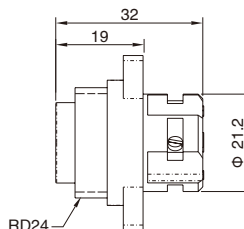
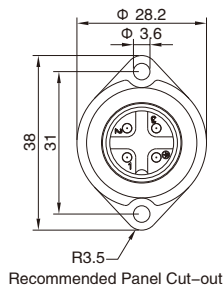
Remarks

- Please refer to Page 578 for the Conversion between American Wire Gauge AWG and Wire Cross-section mm².
- Please refer to Page 423 for products' part number encoding rule.

RD24 Male Panel Mount, Screw joint, Front fastened

- Connector series: RD24
- Gender: Male
- Locking type: Fix screw
- Mounting type: Front fastened
- Part No.: MA24MWAFP***ST

*** refers to pins number



General information

Ambient temperature:	-25°C ~ +125 °C
Connector insert:	PBT
Connector contacts:	Brass with silver plated
Coupling nut/screw:	PBT
Seal / O-ring:	Epoxy resin / EPDM
Termination type:	Screw

Insulation resistance:	≥ 100MΩ
Contact resistance:	≤ 5mΩ
Shielding:	Unavailable
IP rating:	IP 68 in locked condition
Mating endurance:	>500 cycles

Electrical data & Mechanical data

Contacts	Contacts termination	Rated current	Voltage		Wire gauge / size		Wire insulation	Part No.
			A/C	D/C	AWG	mm ²		
1+PE (1+1) A-Coding	Screw joint	12A	600V	600V	18~14AWG	0.75	PVC wire or customized	MA24MWAFP1+1ST
2+PE (2+1) A-Coding	Screw joint	12A	600V	600V	18~14AWG	0.75	PVC wire or customized	MA24MWAFP2+1ST
3+PE (3+1) A-Coding	Screw joint	12A	600V	600V	18~14AWG	0.75	PVC wire or customized	MA24MWAFP3+1ST

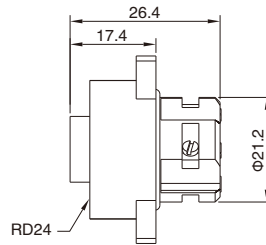
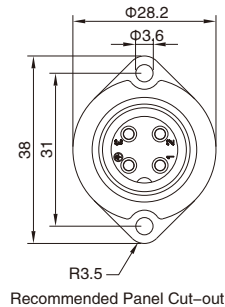
Remarks

- Please refer to Page 578 for the Conversion between American Wire Gauge AWG and Wire Cross-section mm².
- Please refer to Page 423 for products' part number encoding rule.

RD24 Female Panel Mount, Screw joint, Front fastened

- Connector series: RD24
- Gender: Female
- Locking type: Fix screw
- Mounting type: Front fastened
- Part No.: MA24FWAFP***ST

*** refers to pins number



General information

Ambient temperature:	-25°C ~ +125 °C
Connector insert:	PBT
Connector contacts:	Brass with silver plated
Coupling nut/screw:	PBT
Seal / O-ring:	Epoxy resin / EPDM
Termination type:	Screw

Insulation resistance:	≥ 100MΩ
Contact resistance:	≤ 5mΩ
Shielding:	Unavailable
IP rating:	IP 68 in locked condition
Mating endurance:	>500 cycles

Electrical data & Mechanical data

Contacts		Contacts termination	Rated current	Voltage		Wire gauge / size		Wire insulation	Part No.
				A/C	D/C	AWG	mm ²		
1+PE (1+1)	A-Coding	Screw joint	12A	600V	600V	18~14AWG	0.75	PVC wire or customized	MA24FWAFP1+1ST
2+PE (2+1)	A-Coding	Screw joint	12A	600V	600V	18~14AWG	0.75	PVC wire or customized	MA24FWAFP2+1ST
3+PE (3+1)	A-Coding	Screw joint	12A	600V	600V	18~14AWG	0.75	PVC wire or customized	MA24FWAFP3+1ST

Remarks

- Please refer to Page 578 for the Conversion between American Wire Gauge AWG and Wire Cross-section mm².
- Please refer to Page 423 for products' part number encoding rule.